

# MEASURING EQUIPMENT

## ROMEAS 82.05 Versine Measuring Device

**For measuring track curves.**

- Not independent of clearance gauge
- Two aluminium angle supports with level
- 50 m chord/nylon rope
- With ruler
- Complete in faux leather bag
- Weight 2.6 kg



## ROMEAS 82.06 Versine Measuring Device

**For easy checking and determination of versine values in a track curve.**

- Independent of clearance gauge
- Can be used for all common rail types
- Measuring chord can be adjusted to rail height as well as in lateral direction
- Easy fastening at the foot of the rail
- Consisting of 2 tension clamps with rope drum and 50 m chord/nylon rope
- Complete in faux leather bag
- Weight 4.3 kg



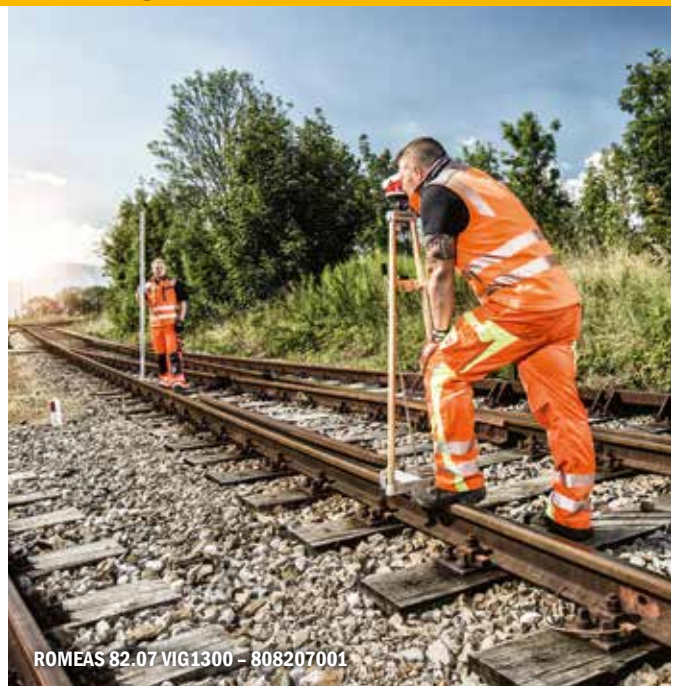
## ROMEAS 82.07 VIG1300 Sighting and Levelling Unit

**Optical instrument for determining longitudinal level, track level and switch level.**

### THE ADVANTAGES. YOUR BENEFITS.

#### Ergonomic & precise

- High-quality optics with tilting device
- Sturdy tripod with practical quick-fastening and bubble tube for checking alignment
- Sighting rod with level for alignment and transport bracket can be segmented
- Mirrored circular bubble
- With scale for displaying rotation area
- True image



## SPECIFICATION

Optics	
Height-adjustable	+ 50 mm
Tilting range	± 40 ‰
True image	
Telescope magnification	24-fold
Shortest sighting range	< 0.5 m
Rotation range	with micro adjustment 360°
Sighting rod	
Measuring scale	with mm/E-graduation
Measuring range of basic scale	± 800 mm
Measuring range of adjustable level slide	+150 mm to -100 mm
Total weight	10.3 kg

## ACCESSORIES

Push-on part for grooved rail

## ROMEAS 82.11 SQUARE Track Square



**For aligning sleepers.**

### THE ADVANTAGES. YOUR BENEFITS.

- Double leg
- In robust aluminium construction
- With inner and outer stops
- Insulated from rail to rail

SPECIFICATION	Fixed design	Collapsible design	Version for switch blades
Dimensions (L x W)	1700 x 1400 mm	1700 x 700 mm	800 x 600 mm
Weight	3.6 kg	3.2 kg	1.8 kg