

# EQUIPMENT TOOLS



**ROTOOL Eject 69.16**

**Clip Bolt Ejecting Device**

## ROTOOL 68.03 Rail Tilting Device

For manual tilting of all common rail types.

- For all rails of a weight up to 65 kg/m
- Dimensions (L x W x H) 1300 x 140 x 35 mm
- Weight from 6 kg



ROTOOL 68.03 - 9891551001

## ROTOOL Punch 69.01 Drift Punch

**Versions:**

- 9800690290 Long version 290 mm,  
Ø 15mm (cylindrical), from 1.8 kg
- 9800690001 Short version 210 mm,  
Ø 16 mm (cylindrical), from 1.4 kg
- 9800690005 Hickory handle for track drift punch



## ROTOOL Crow 69.02 Crow Bar

**Versions:**

- 9002500087 with spike pulling notch and point,  
L=1250 mm, Ø 30 mm, from 6.2 kg
- 9002500088 with cutting edge and point,  
L=1500 mm, Ø 30 mm, from 8.0 kg
- 9806902001 with ball and point,  
L=1800 mm, Ø 30 mm, from 10.1 kg



## ROTOOL Hammer 69.03 Hammer

- For positioning rails into grooved plates and for driving plastic dowels into concrete sleepers
- With wear-resistant, replaceable plastic inserts

**Versions:**

- 9002500089 Hammer Ø 100 mm, from 5.3 kg
- 9002500112 Hammer Ø 125 mm, from 7.2 kg
- 9002501191 Hickory handle for hammer



## ROTOOL Ram 69.04 Track Ram

- To be used by 4 persons
- Wear-resistant, replaceable plastic inserts

### Versions:

9800690004 Track ram, from 103 kg



## ROTOOL Pick 69.05 Tamping Pick

### Versions:

8006905001 Tamping pick with handle, from 4.3 kg  
9002500092 Tamping pick without handle, from 3.75 kg  
9002500093 Handle for tamping pick



## ROTOOL Sleeper 69.06 Sleeper Hammer

- Forged with oval eye

### Versions:

9002501193 Sleeper hammer 5 KG, from 5.5 kg  
9002501194 Sleeper hammer 6 KG, from 6.5 kg  
9002501195 Sleeper hammer 8 KG, from 9 kg



## ROTOOL Fork 69.07 Ballast Fork

### Versions:

8006907001 Ballast fork (9-arm) with handle, from 2.7 kg  
9002500095 Ballast fork (9-arm) without handle, from 1.8 kg  
9002500109 Fork handle



## ROTOOL Lever 69.08 Points Lever

- For installing and removing plastic clips Ssb2, Ssb3 and Ssb4

### Versions:

9800690003 Points lever, from 6 kg



## ROTOOL Shovel 69.09 Steel Sheet Shovel

### Versions:

- 8006909001 Steel sheet shovel with handle, from 1.9 kg
- 9002500098 Steel sheet shovel without handle, from 1.1 kg
- 9002500109 Shovel handle

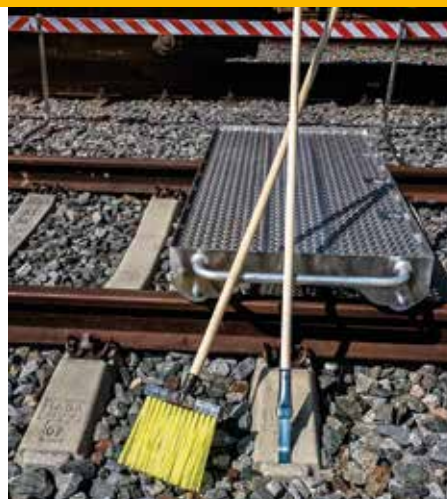


## ROTOOL Broom 69.10 Switch Broom

- Switch broom with polypropylene insert
- Optional: Ice scraper attachment (self-installation)

### Versions:

- 8006910002 Switch broom with handle, without ice scraper, from 1.9 kg
- 5169100100 Ice scraper without handle, from 1.1 kg



## ROTOOL Adze 69.11 Adze

### Versions:

- 8006911001 Flat adze 85 mm with handle, from 1.4 kg
- 9002500120 Flat adze 85 mm without handle, from 1.1 kg
- 9002500120 Handle for adze



## ROTOOL Chisel 69.12 Cold Chisel

### Versions:

- 9002500103 Cold chisel with wood handle  
L= 600 mm, from 1.9 kg
- 9002500168 Cold chisel with fiberglass handle  
L= 600 mm, from 1.7 kg
- 9002500104 Cold chisel without handle
- 9002500139 Wood handle for cold chisel



**ROHORN Single****69.13****Single-Tone Signal Horn****Versions:**

- 9002500103 Cold chisel with wood handle  
L= 600 mm, from 1.9 kg
- 9002500168 Cold chisel with fibreglass handle  
L= 600 mm, from 1.7 kg
- 9002500104 Cold chisel without handle
- 9002500139 Wood handle for cold chisel

**ROSIGN****69.14****SH 2 Stop Disc**

Rectangular (440 x 550 mm), red with white border

- 9002002107 Stop disc without holder
- 9002007862 Stop disc, reflecting.  
without holder
- 9002002293 Holder for stop disc,  
to be fixed on the rail
- 9000800249 Holder for stop disc,  
to be fixed on the rail, suitable for 2 x SH2 discs  
(with option for flashing warning light)

**ROHORN Multi****69.15****Multi-Tone Signal Horn****Versions:**

- 9800690015 Multi-tone signal horn, from 0.8 kg
- 9800690151 Replaceable mouthpiece (plastic)

**ROTOOL Eject****69.16****Clip Bolt Ejecting Device**

**For removing rusted clip bolts from  
grooved base plates.**

- 8006916001 Clip bolt ejector



## ROTOOL Extract 69.18 Extraction Socket

**For extracting torn off sleeper screws.**

Easy to extract with T-key, impact wrench or wrenching machine.

- Adapter AF 39
- Profile inside diameter 17.5 mm
- Outside diameter 26 mm

**Versions:**

- 8338950101 Extraction socket for wooden sleeper screw – short (L = 110 mm)
- 8338950180 Extraction socket for wooden sleeper screw – long (L = 150 mm)



## ROLIFT 69.20 Sleeper Lifting Device

**For lifting lower lying sleepers during track installation.**

- Hook-in part for ribbed plates (K-type construction) and for sleeper bolts (W-type construction)
- Dimensions (L x W x H) 1040 x 60 x 190 mm
- Weight from 4 kg



## Torque Wrench

- 9002501218 Torque range 50 – 320 Nm
- 9002501790 Torque range 130 – 650 Nm
- 9002501248 Torque range 400 – 1000 Nm

